

Ian Firth Hardware Ltd

Lady Ann House, Shaw Cross Business Park,
Dewsbury, WF12 7RD
Tel. 01924 438112

www.ianfirth.co.uk

quicksemble

Internal Doorkits

Product Information, Installation,

Care & Maintenance Guidance



Internal Doors

Technical Details

Available Sizes:

457 x 1981	(1' 6" x 6' 6")
533 x 1981	(1' 9" x 6' 6")
610 x 1981	(2' 0" x 6' 6")
686 x 1981	(2' 3" x 6' 6")
762 x 1981	(2' 6" x 6' 6")
838 x 1981	(2' 9" x 6' 6")
864 x 1981*	(2' 10" x 6' 6")

Door thickness:

Standard Doors	35mm thick
FD30 Fire Doors	44mm thick
FD60 Fire Doors	54mm thick

Metric sizes are available in some designs.

* 864mm or wider doors are usually priced more than 838mm and under.

- 1 2-D hinges are not suitable for solid core and engineered non-fire doors due to weight exceeding strength limit of hinge*.
- 2 3-D Hinges are required for fire doors FD30 and solid core doors.
- 3 Ball-bearing hinges are required for fire doors FD60.

MDF Lining Sets:

Double primed white MDF profiles available in a variety of widths to suit different wall thicknesses. Stop sets supplied loose to be fitted snug up to door.

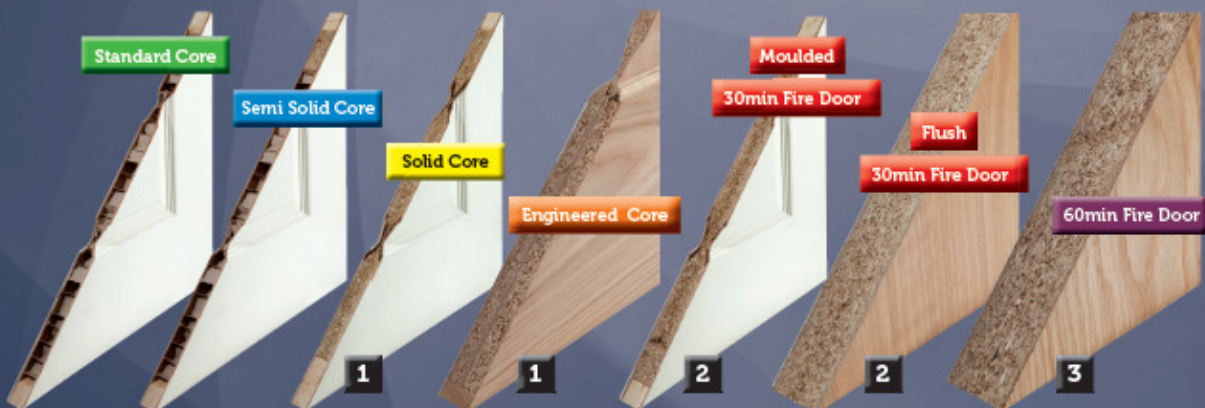
Structural Openings - Internal Doorkits

	Imperial		non-fire = 35mm thick, FD30 = 44mm thick				35mm thick	44mm thick
	Door	Lining	Fitting Tol	Sill Gap	Kit Width	Structural	Clear Opening	Clear Opening
1'9"	533	25	2	-	587	592	485	476
2'0"	610	25	2	-	664	669	562	553
2'3"	686	25	2	-	740	745	638	629
2'6"	762	25	2	-	816	821	714	705
2'9"	838	25	2	-	892	897	790	781
2'10**	864	25	2	-	918	923	816	807
	Door	Lining	Fitting Tol	Sill Gap	Kit Height	Structural		
6'6"	1981	25	2	20	2028	2033		

Metric sizes are available.

Interior Door Construction

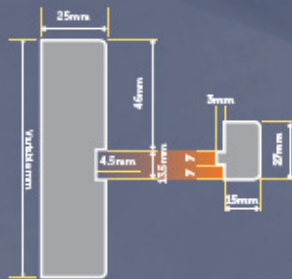
Our choice of internal door constructions vary depending on the door you select. We have included some of the popular options to help you choose the right specification for your requirements.



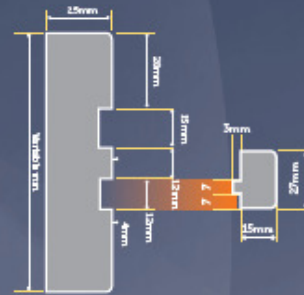


- ✓ Doors pre-machined for latches/locks and hinges
- ✓ CE marked latches/locks pre-fitted
- ✓ Strike plates have adjustable lugs
- ✓ 2D adjustable patented hinges pre-fitted to 34mm doors²
- ✓ 3D adjustable patented fire-rated hinges pre-fitted to 44mm fire doors
- ✓ 3D hinge can be supplied as a spring hinge for self-closing
- ✓ Hinge system snap-fits for quick assembly
- ✓ MDF primed white linings pre-fitted with keeps and hinges
- ✓ Delivered in Plot lots
- ✓ Lever handles delivered with door leaves.

Standard Lining Components



FD30 Firecheck Lining Components



Patented *quicksemble* adjustable, snap-in hinge system

Hinge cradles are secured to the door frame with the corresponding hinge receivers fitted to the door leaf. Installation, or hanging of the door, is then carried out simply by 'snapping' the door receivers onto the hinge jamb. Once in place the relative door position can be adjusted to ensure an optimum fit within the doorframe.

- Vertical adjustment - allows the door to be moved up or down +/- 2.5mm (This feature only applies to 3D hinges)
- Horizontal adjustment - allows the door to be moved left or right +/- 2.5mm
- Lateral adjustment - allows the door to be moved in or out of the doorframe rebate +/- 2.5mm
- Suitable for: 34 and 44mm thick doors



Adjust the hinge: Horizontally, To move the door side to side.



Adjust the hinge: Laterally, To move the door in and out.



Adjust the hinge: Vertically, To move the door up or down. (3D only)

Fitting in 3 easy steps



Fit heads to legs and fix into structural opening



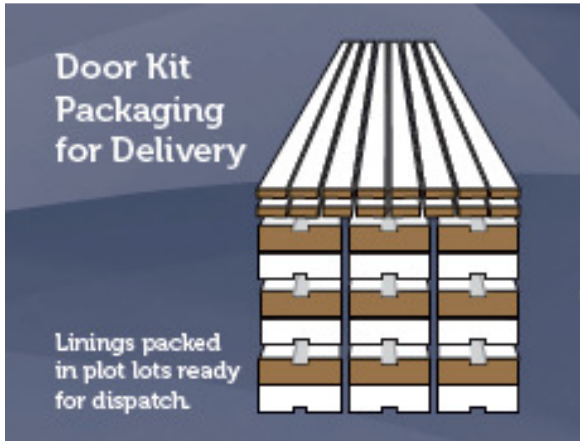
Snap in the door leaf to the frame



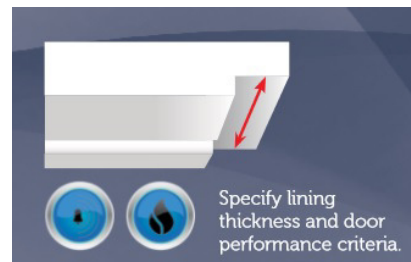
Fit stops and architrave

²2-D hinges are not suitable for solid core non-fire doors due to weight exceeding strength limit of hinge.

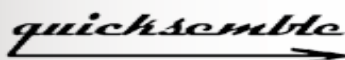
MDF Lining Sets:



- ✓ MDF linings should be stored flat indoors, in a dry, well ventilated building. Never outside.
- ✓ If MDF gets damp it will swell, so any wet components should be replaced.
- ✓ Store them off the ground on three bearers that are at least the width of the pack.
- ✓ Order so that they are delivered within only a few days prior to the fitting date.
- ✓ Keep wrapped in packaging as delivered for as long as possible.



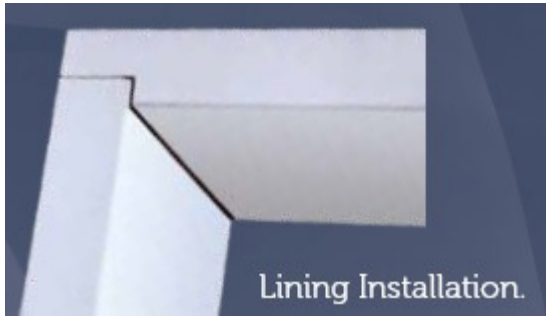
- ✓ Structural opening needs to be 59mm wider than the door and 52mm taller than the door height.
- ✓ If partition is solid, then a plywood sub-liner should be fitted to line up the plasterwork to.
- ✓ The structural opening formed within this sub-liner should be as described above.
- ✓ Floor covering gap of 20mm under the door has been incorporated into the design of the legs.
- ✓ The width of the lining purchased should suit the partition plus plasterboard & skim.
- ✓ Linings are either standard, to suit 35mm or 40mm non-fire doors, or fire to suit 44mm FD30 doors.
- ✓ Standard linings have one groove to take the stop.
- ✓ Fire Check linings have two grooves, one to take the stop, one pre-fitted with intumescent strip.
- ✓ White PVC coated graphite based 15x4mm fire intumescent strip is pre-fitted to FD30 linings.
- ✓ Smoke and acoustic seals can be fitted as extra.



Door Kit lining legs are reversible so NOT handed

Each lining set comprises:

- 1no hinge leg, pre-fitted with three hinge flaps in cradles
- 1no keep leg, pre-fitted with a lock/latch strike plate and nylon box
- 1no trenched head
- 2no stop legs
- 1no stop head



1. Select the lining set of two legs and a head and determine the correct handing
2. On a level surface assemble the three sided frame checking handing and grooves are continuous.
3. Drill two pilot holes 12mm from each end of the head and screw head to legs with 4no 63mm long screws with thread to suit MDF material. Ensure heads are sunk flush with surface of head.
4. If any part of the lining splits or cracks it should be replaced.
5. Check the internal rebate size is 4mm wider than the door width, and 27mm taller than the door height.



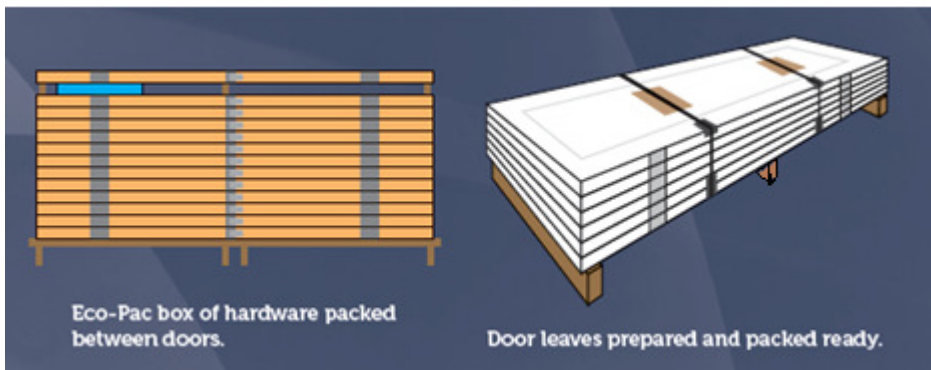
6. Offer lining to opening and ensure hinge leg is square and plumb. Fix to opening in centre of the stop groove using 2no 63mm screws initially.
7. Ensure the head is square, use a dummy door to set this if necessary.
8. Fit the lock/latch leg in the opening square and plumb, using a dummy door if necessary.
9. Pack gaps between the lining and partition if necessary to ensure lining is straight and square.
10. Ideally each leg should have 4no fixings, and two at the head if partition material allows.
11. Check again internal rebate measurements are correct, adjust if required.



12. For fire doors fill any gaps between lining and wall with a mineral wool or intumescent paste.
13. If fitting architrave ensure a 10mm quirk is left to allow hinge knuckles to operate without binding.

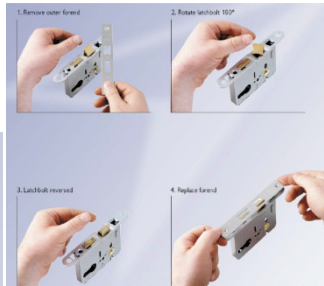


14. Take the stops which are reversible, so offer to the lining the correct way around if the door is 35mm, 40mm or 44mm thick.
15. Slide the stop to the face of the dummy door to ensure a snug fit, but not too tight.
16. Stops are glued & pinned in position.

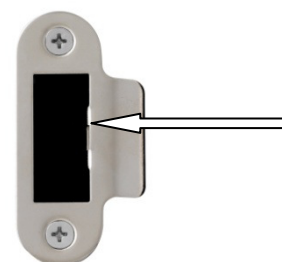
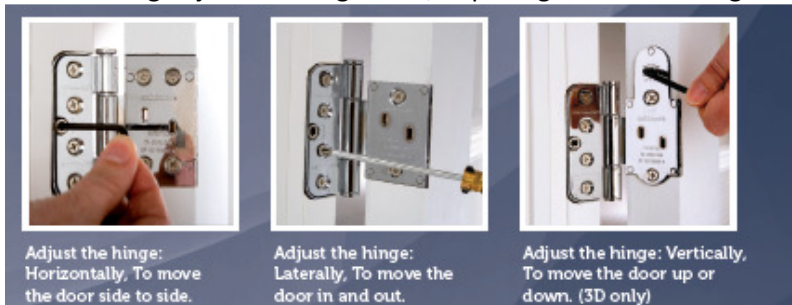


- ✓ Door kit doors are supplied palletised and banded in plot lots. One pallet may have more than one plot of doors. Each plot will be labeled on the pallet and signified in a stack with change up in door size.
- ✓ Doors are pre-fitted with hinge receivers and latch/lock.
- ✓ If lever furniture and other items have been ordered at the same time these are supplied in Eco-Pac boxes and travel with the doors.
- ✓ Doors should be stored in a dry, well ventilated building with a constant 'room' temperature.
- ✓ The doors should be kept off the floor on three or more sturdy bearers.
- ✓ Never store doors in a damp atmosphere and beside a heater.
- ✓ Never store doors outside exposed to weather including in direct sunlight.
- ✓ Order doors for delivery to site as near to fitting date as possible.
- ✓ Keep them in packaging as long as possible.
- ✓ Wait until all wet trades have been completed and the house is dry before hanging internal doors.

Door Kit doors are reversible so NOT handed



1. Take the door leaf and check handing. Reverse latch bolt and hinge receivers if necessary.
2. On the frame open out the hinge flaps on all three hinges and over up the receivers on the door.
3. Push each flap into the slot in the receiver only part way ensuring all three hinges are in line.
4. Push door further so that each hinge snaps into position.
5. Fit the lever handle and bathroom turn/release if needed. Check correct fixings have been used. NB Ian Firth Hardware Ltd cannot be held responsible for latches/locks not functioning correctly if lever furniture is not purchased from our range.
6. Fit metal/rubber door stops to skirting or floor behind door to project adjacent wall when door is opened.
7. Check gaps between lining legs/head and door are 2mm continually. Adjust fitting of door if needed using adjustable hinges and/or pulling forward the lug on the strikeplate.



Decoration

MDF linings and stops are supplied white primed for on-site painting.

If doors are supplied primed they should be painted as soon as possible after hanging.

Exposed timber and cut MDF components can absorb moisture. Decorate as quickly as possible.

One coat undercoat and two coats top coat (gloss or semi-gloss) is recommended applied with a brush at the same time as architrave, skirting and window boards are decorated.

The intumescent fire seal can be painted over so do not remove for decoration.

Fully finished doors are supplied pre-painted on the faces of the skins, these have a semi-gloss finish. Touch-up paint can be available if required. Long edges are edge banded, other edges are primed.

Do not fully paint over the batch reference numbers stamped on the top edge of the door as these would be needed in the event of any warranty claim.

Final Inspection & Cleaning

All moving parts of ironmongery should be lubricated with a silicone based lubricant such as 'Duck Oil' or 'Tri-Flo'. Wipe away any excess lubricant with a soft cloth.

Wipe surface of door leaf with a dry soft cloth to remove dust.

All items of ironmongery should only be cleaned with warm soapy water and a soft cloth.

Never use any household cleaners or abrasive scourers as this will damage the finish.

Ongoing Care & Maintenance

Doors will settle on their hinges after hanging so it may be necessary to adjust the hinges as above. Any black dust seen on or near the hinge knuckles is a sign of lack of lubrication. Wipe dust away and lubricate as above.

Regularly lubricate all moving parts of ironmongery as above especially in warm, dry conditions.

Lever furniture and chrome hinges will keep their finish if regularly cleaned as above.

Removing Door from Frame

Householders or operatives carrying out maintenance work after installation should be advised to unscrew the receivers to remove the door leaf from the frame, treating the hinge as a conventional one-piece butt hinge.

FD30 Fire Doors

Doors supplied as FD30 fire doors must not be cut down on site and no additional holes made within them as this will invalidate fire test evidence. Fire doors must only be fitted into linings with intumescent strip as supplied and must be fitted with CE marked locks, latches and hinges. Any interference with the doorset design and/or components will invalidate fire test evidence.

If items are damaged they should be replaced immediately with like-for-like components.

Spare Parts

<p>Stop set to suit 2040x926mm door. 2no legs & 1no head</p>  <p>can be cut down to size on site</p>	<p>Touch Up Paint 250ml white</p> 	<p>Tubular Latch Body</p>  <p>65mm case size IFM51.01</p>	<p>Tubular Latch Forend</p>  <p>Can be Brass or PSS IFM52.21</p>
<p>Tubular Latch Strike</p>  <p>Can be Brass or Chrome IFM52.13</p>	<p>Latch Box Keep</p>  <p>IFM52.17</p>	<p>Bathroom Lock Body</p>  <p>65mm case size IFM51.07</p>	<p>Bathroom Lock Forend</p>  <p>Can be Brass or PSS IFM52.25</p>
<p>Bathroom Lock Strike</p>  <p>Can be Brass or Chrome IFM52.07</p>	<p>Lock Box Keep</p>  <p>IFM52.08</p>	<p>2D Hinge Flap & Cradle</p>  <p>Can be White or Chrome to suit 35mm door IFL73.01</p>	<p>2D Hinge Receiver</p>  <p>Can be White or Chrome to suit 35mm door IFL73.02</p>
<p>3D Hinge Flap & Cradle Set</p>  <p>Can be White or Chrome Can be to suit 35mm, 40mm and 44mm doors. IFL7.34FC/40FC/44FC</p>	<p>3D Spring Hinge Flap & Cradle Set</p>  <p>Can be White or Chrome to suit 44mm doors IFL7.99</p>	<p>3D Hinge Receiver Set</p>  <p>Can be White or Chrome Can be to suit 35mm, 40mm and 44mm doors IFL7.34R/40R/44R</p>	<p>Dummy Doors</p>  <p>Available in various sizes on request.</p>



Hospital Kits

Can be supplied comprising:

- 10no Stop Sets
- 7no Complete Tubular Latches
- 3no Complete Bathroom Locks
- 10no Complete sets of hinges as used on the site
- 1no Touch Up Paint
- 10sets Lever Furniture & (3sets)Turn Release Sets as used on the site

Ask Sales Office for more details

sales@ianfirth.co.uk Tel 01924-438112

www.ianfirth.co.uk