

# Cylinder Installation Guide

## Pre-Installation:

1. Care should be taken to prepare doors accurately.
2. Ensure that lock cases are fitted squarely within the door (Figure 1).
3. Ensure that any operating furniture and escutcheons which have already been installed have been correctly aligned.
4. Check if the cylinder is handed - this should be clearly marked on the product and also on manufacturer's instructions. If it is handed, care should be taken that it is installed correctly.
5. The cylinder should be visibly inspected for damage prior to installation.
6. Damaged cylinders should not be fitted.
7. Some cylinders have a sacrificial snap point which is part of their security feature (Figure 2). Check that this sacrificial point is not damaged, bent or twisted in any way.
8. Check that the manufacturer's installation, operation and maintenance instructions are included with the product.
9. The operation of the cylinder, along with any cylinder specific functions should be checked and tested prior to installation.
  - a. Check and test operation of the keys - insert keys, rotate through 360° and ensure the cylinder CAM is rotating.
  - b. Check and test operation of the thumb turn (cylinder model dependent) - rotate through 360° and ensure the cylinder CAM is rotating.
10. Check that the door sits squarely and does not bind in anyway against the door frame.
11. Check the operation of the door in that it swings easily between the open and closing planes.



Figure 1 - Lock case fitted squarely within the door



Figure 2 - Sacrificial snap channel on cylinder

## Installation (cont):

9. Ensure M5 securing bolt length is sufficient to engage fully through the cylinders but finishes before reaching the back of the lock case.
10. Tighten the cylinder retaining screw. **DO NOT USE POWER TOOLS, DO NOT OVER TIGHTEN.**
11. When tightening, ensure the cylinder is perpendicular to the lock/door both vertically and horizontally.
12. If the cylinder has a sacrificial snap point as part of its security feature, care must be taken when fixing the retaining screw. Excessive force from a power screwdriver or battery drill will apply pressure between the cylinder and the lockcase that may bend the cylinder out of alignment and impact its operation (Figure 6).
13. Fit escutcheons or door furniture, taking care to not affect orientation of the cylinder.
14. With the door open, first check the cylinder operates smoothly from both sides by using the key/thumb turn, as appropriate (Figure 7).
15. Ensure the door latches correctly and that the deadbolt (if appropriate) throws smoothly into the keeper (Figure 8). Adjust strike plates accordingly.

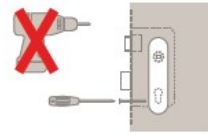


Figure 6 - Do not use excessive force or power tools



Figure 7 - Check the cylinder operates smoothly

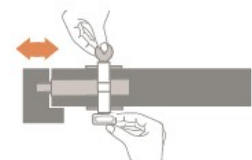


Figure 8 - Check the deadbolt throws into the keep

## Installation:

1. When installing cylinders, the hole drilled in the door face should follow the shape of the cylinders and be as tight as possible; furthermore, the single cylinder's door preparation should penetrate through only half the thickness of the door leaf.
2. Using the key or thumb turn set the CAM in the centre of the cylinder body. Do not use force (Figure 3).

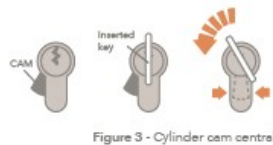


Figure 3 - Cylinder cam central

3. Any backplates and escutcheons should be loosened prior to cylinder installation.

4. Insert the cylinder into the lock case making sure it is horizontal and at 90° to the door face before fully tightening the escutcheon/backplate fixings (Figure 4).

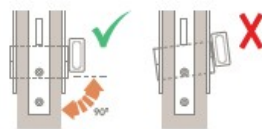


Figure 4 - Inserting the cylinder

5. If the cylinder has a sacrificial snap point as part of its security feature, care must be taken on installation not to bend, twist or open this snap point as the security feature could be activated.

6. The cylinder should enter the door cavity and cylinder piercing of the lock case without any force.

7. **DO NOT FORCE** the cylinder into place as this will damage the cylinder and lock case (Figure 5).

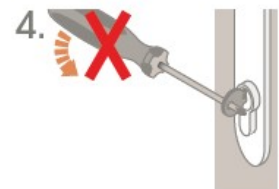


Figure 5 - Do not force the cylinder

## Operation:



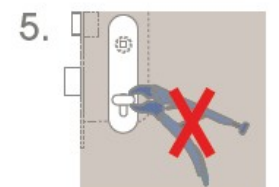
Do not force the key into the cylinder.



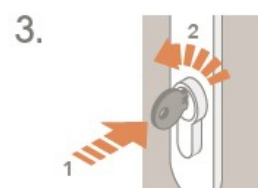
Do not insert objects to increase the torque on the key bow.



Do not use damaged or bent keys.



**DO NOT FORCE** the thumb turn with a device such as vice grips to increase leverage.



Make sure the key is inserted fully (1) into the cylinder before turning (2). **DO NOT** force the key to turn.



Do not use the thumb turn or key to pull the door open or closed.