

# External Doorset – Installation Guidance

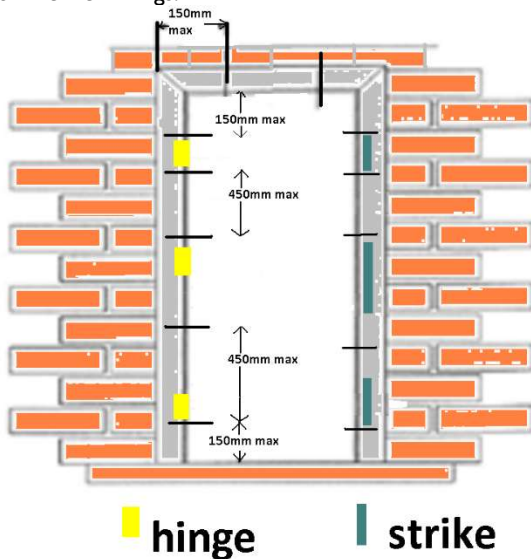


## Please Note:

The code of practice for installation as issued by the British Plastics Federation should be complied with at all times.

Failure to install your doorset and all associated items in accordance with these instructions may invalidate any future warranty claim

Select fixings that are appropriate for the substrate the frame is to be fitted to and the cavity closure system if specified. When screwing into masonry aim for centre of brick/block avoiding mortar joints. For timber frame systems refer to system provider's detail for recommended fixings.



■ hinge | ■ strike

## Fixing Positions Recommended:-

Generally, all three sides of the frame shall be secured, however it is understood that dependant on the lintel used at the head, fixing at this point is not always possible. There should be minimum of 5no fixing points to each jamb, each fixing point being above or below a hinge or keep position. Corner fixings should be maximum 150mm away from the external corner. Intermediate fixings should be at centres no greater than 450mm. Fanlight frames should be fitted with a fixing through the jamb centrally into the structural opening. If fanlights or sidelights are supplied pre-glazed it is expected the installer will deglaze the fanlight to fit the frame then re-glaze. Fixings chosen should be appropriate for the frame material and reinforcement used in frame as well as the material screws will be driven into behind the frame. Our UPVC frames have steel reinforcement in the legs therefore we recommend the fixing method as below. Some cover caps may be required, not supplied.

## Before Any Work Commences:

Ensure doorset is correct in size and specification to your order

Ensure aperture size to doorset is correct. It is recommended 5mm minimum to 10mm maximum tolerance to enable correct installation. Opening should be square and plumb.

Door and frame should be installed as complete unit. There should be no need to remove doorleaf from hinges. However should it be necessary, for loose pin hinges simply knock out the hinge pins and retain, or for adjustable hinges see instructions below.

Fixings should be appropriate to the structural opening formed, the density of masonry, and cavity closer method.

### Step 1

Offer doorset to opening and place two packers under sill 150mm apart centrally (but on top of DPC membrane) ensuring it is level and straight.

### Step 2

Select fixings that are appropriate for the substrate the frame is to be fitted to and the cavity closure system specified.

### Step 3

Using frame anchor screw type fixings (not hammer fixings) or fixing straps, 4no per leg, positioned as overleaf, Fix hinge leg first, starting at top corner and work down leg, ensuring frame is in line, square and plumb. Use packers above and below each fixing point to ensure frame leg is straight.

### Step 4

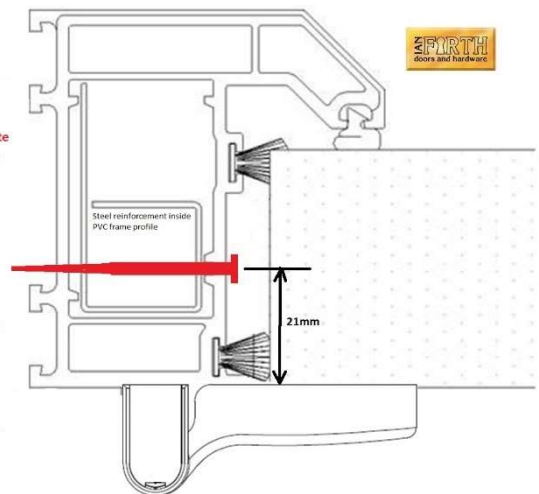
Close the door into the frame and square the locking leg into the structural opening, pack leg to ensure it is straight, open doorleaf and fix locking leg as step 3.

### Step 5

Insert packers to head to ensure all is square, close door and operate lock and handle to ensure smooth operation. Adjust keeps and/or hinges if necessary to ensure lock operates smoothly and without bolts catching.

### Step 6

Ensure gaps between doorleaf and frame on inside are consistent at 3mm at the head and down each jamb. Adjust hinges or frame fixings to correct if necessary.



Use H5 drill to create pilot holes at fixing screw positions.

Min 5no fixings down each leg.  
21mm from inside face of frame.

Screw selected should be suited to the substrate material and the head should have flange.

## We can also supply Fixing Packs suitable for some building methods – ask for more details



External Door Fixings Pack – Masonry build using Structural Cavity Closer System

Our Comp Code = **EXTDOORFITPACK2B**

1 Pack consists of:



10no L80-725-6x65mm SFS Anchor Screws



10no 7.5x100mm concrete screws  
10no 7.5x102mm concrete screws



10no EV56125 GouRock CP57T200 straps

### Step 7

Ensure diagonal measurements of fitted frame are equal. Adjust hinges or frame fixings to correct if necessary.

### Step 8

When foam filling gaps between frame and brickwork insert 3mm packers temporarily between door leaf and frame rebate. After frame has set remove packers and re-check gaps as step 6. Doorset should be mastic sealed as soon as possible.

### Step 9

Aluminium threshold sill and rain deflector should be bedded in an appropriate weather resistant silicone/adhesive (such as Stixall) in a continuous bead. Ensure drainage channels are free from debris and sealant. Important that the joint between frame and threshold are sealed. Rain deflector should be cut to size and fitted to door bedded in sealant.

### Step 10

Fit the cylinder, lever handles, letterplate or cylinder guard/letterplate cowl, doorchain, hinge security screw and caps where applicable (see illustration 6 below). **All moving parts, hinges, latch, lock bolts, handle should be lubricated with 'Tri-flo' or 'WD40' or similar to ensure smooth operation**

### Step 11

Weatherseal compression can be adjusted by using the adjustment screws on face of the keep plates and/or by adjusting the adjustable hinges. See below. For exposed areas it is recommended to apply silicone around and under letterplates, handles and cylinders.

**Doorset should now be fully operational.**

## Post installation

- The doorset is fully finished so should not come in contact with cleaning products, brick acid, etc, and if becomes dirty due to atmospheric conditions or site operations, it should be washed with warm soapy water and a soft cloth. This applies also to the ironmongery.
- If doorset is fitted during the construction phase and is to be held open for long periods, especially if the doorset has not yet been foam filled or mastic sealed, the doorleaf should be wedged when held open.
- Just before handover to householder, especially if the doorset has not been operated for a long period, the fitting should be checked as overleaf, and all moving parts lubricated as step 10.

# External Doorset – Care & Maintenance Guide



Doorsets will arrive on site wrapped. Do not open wrapping until ready to install. Keep doorsets flat on pallet for as long as possible, Do not lean doorsets back for extended periods of time. Do not store outside unless protected from weather. Complete fitting of all hardware as soon after installation as possible.

NB. To comply with NHBC Secure Escape it is common for there to be a thumbturn on the inside rather than a key

To ensure that your new multi-point door lock functions correctly please follow the operating instructions below.

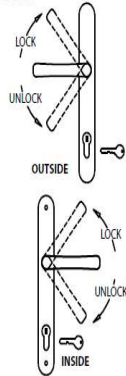
### Lever/Lever Operation

#### To lock (from inside or outside)

1. Close the door firmly to engage the latch (do not depress handle).
2. Lift the lever up to throw the hooks to locked position
3. Turn the key to deadlock

#### To unlock (from inside or outside)

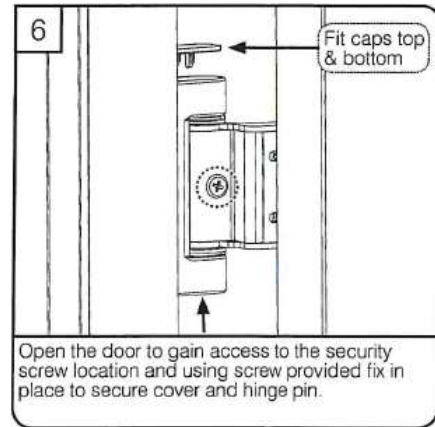
1. Turn the key to unlock the deadbolt
2. Push lever down to disengage the hooks and latch
3. Open the door



### Adjust the strike plates +/-2mm



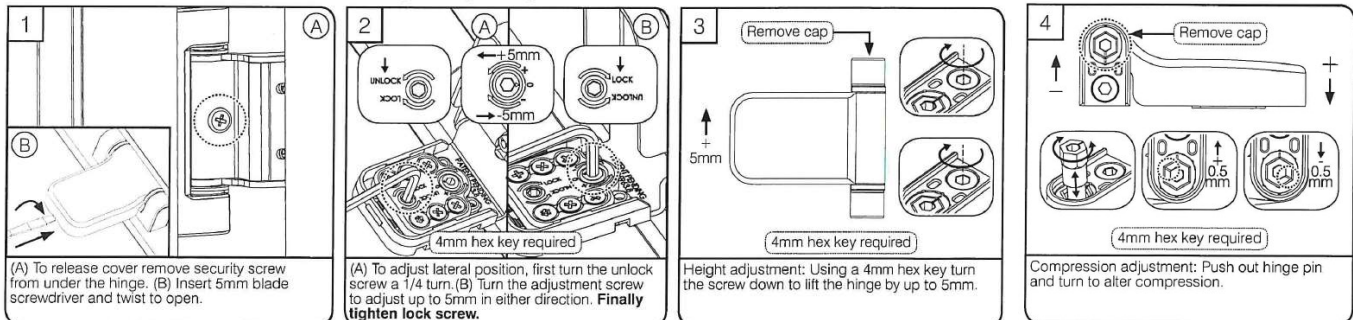
The bolts should throw into the strike plates centrally.



**WARNING:** Do not use any form of chemical cleaners or abrasive cleaning equipment on or near the door leaf, frame, glass or hardware as this will cause damage and will invalidate any warranty. Only clean using warm soapy water with a soft cloth. Hardware fitted to doorsets in coastal regions or near heavy industry will need more regular cleaning to maintain finish.

All newly hung doors will settle in position and will probably need adjusting after a few months. The gaps between the door and the frame looking from the inside should be between 2 to 4mm, the door should be pressed tight up to the seals on all four sides so no draughts can be felt, and the lock bolts should throw into the strike plates without resistance.

### ProSecure Composite Door Hinge Adjusting Instructions



### Final Inspection Checklist:

AREA TO BE CHECKED	OK? YES/NO
<b>Visual Appearance</b>	
1. Doorsets Installed Plumb, square and vertical?	
2. Exposed faces free from surface damage?	
3. Doorset clean and all protective film removed?	
4. Check for weld cracks.	
5. Check for damage to surrounding aperture	
6. Check all internal trims installed correctly	
7. Check site clean and all debris removed	
<b>Glazing</b>	
1. Glazing as specified	
2. No cracks, scratches on glass or signs of sealed unit failure?	
3. Obscure glasses oriented correctly?	

Doorset Operation	
1. Door leaf opens and closes correctly?	
2. No air gaps between frame seal and door leaf?	
3. No scraping/rubbing between hooks & strikers?	
4. Door locks/unlocks satisfactorily	
5. All hardware correctly lubricated?	
6. All hardware attached with correct number of fixings?	
<b>Fixing</b>	
1. Through-frame fixings used at correct distances?	
2. Fixing heads located within frame profile and cover caps fitted?	
<b>Sealing</b>	
1. Sealant joints have smooth finish and are of correct shape?	
2. Sealant to be continuous around frame run?	
3. No excess sealant to be present on frame face?	
<b>Drainage</b>	
1. Threshold drainage channels free from obstructions?	
2. Sub-sill end caps in place and attached firmly?	
3. Sidelight drainage holes free from obstruction (is applicable)	