

<b>UK</b> <b>CA</b>	1121-CPR-UK-AC7851	MILA, DAVENTRY, NN11 8RB. UK	14
<b>CE</b>	2812-CPR-AC5051	EN1935: 2002	2 7 3 0 1 4 0 10

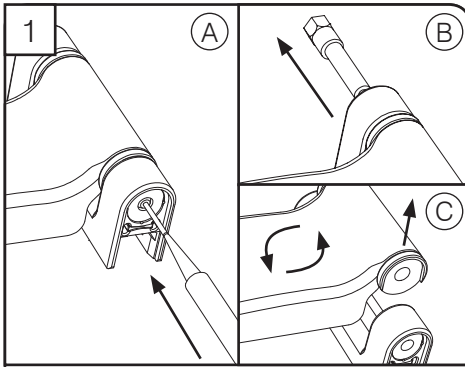
Secured by Design



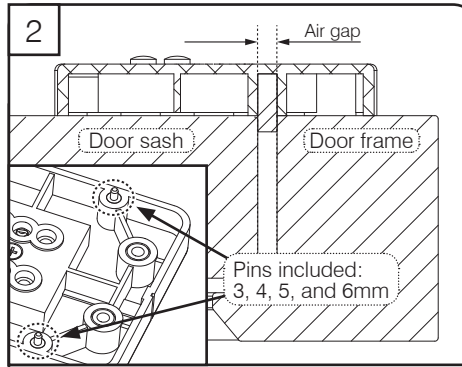
Police Preferred Specification



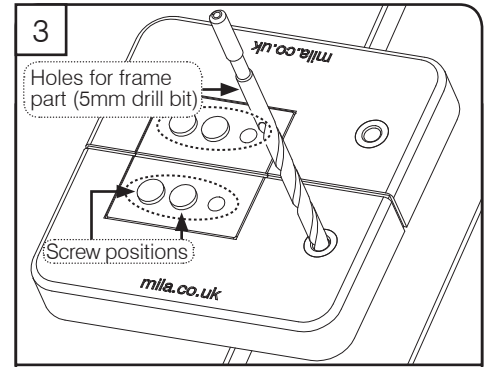
## ProSecure Composite Door Hinge Fitting Instructions



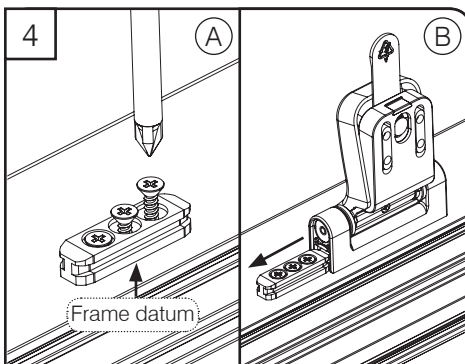
As default the hinge will be set as right handed.  
(A) Ensure that sash part is at a right angle to frame part (B) Push out the pin from bottom.  
(C) Lift free and reverse sash and refit pin.



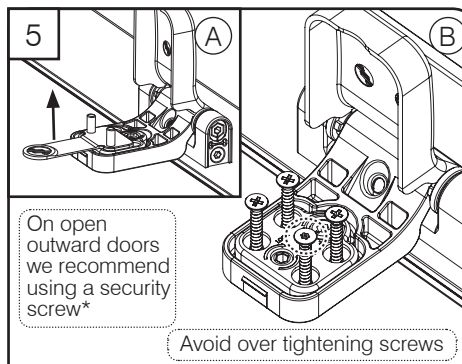
To correctly use the Mila jig, measure the air gap between the door sash and frame. Take the matching pin size and insert them into the underside of the jig, as shown above.



Align the jig using the underside pins then drill holes for the frame and sash part choosing the most suitable position for your door

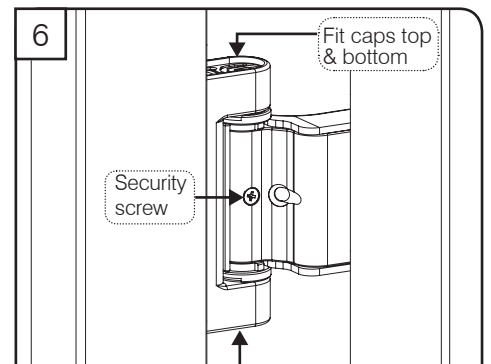


(A) Fit the frame datum into the drilled 5mm holes and screw in place. (B) Take hinge and align the aperture in the frame part and slide into position.



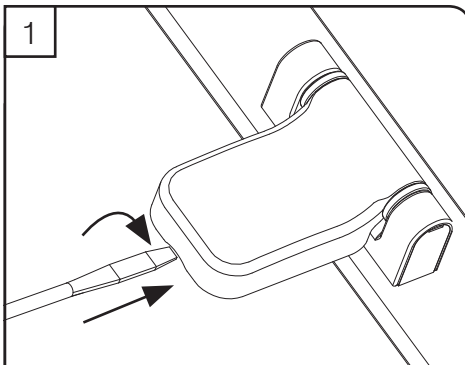
(A) Lift sash cover and remove tongue.  
(B) Secure using 4x screws. Close cover.

\*Screws NOT supplied.

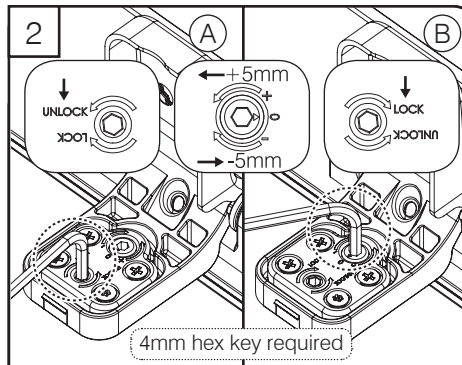


Fit caps top & bottom. Open the door and locate the pre-fitted security screw & check the screw is fully tightened. **This screw is not to be removed.**

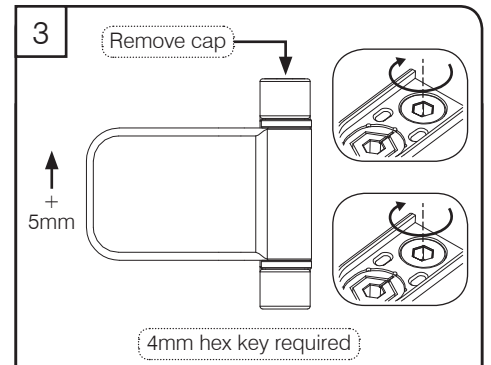
## ProSecure Composite Door Hinge Adjusting Instructions



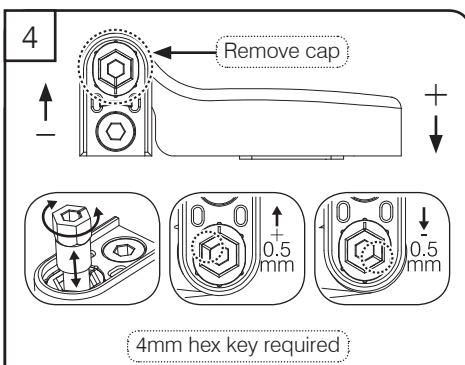
To release cover insert 5mm blade screwdriver and twist to open.



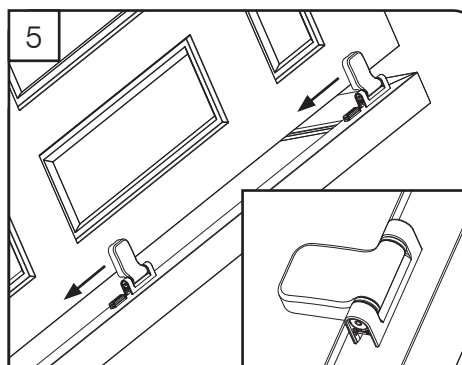
(A) To adjust lateral position, first turn the unlock screw a 1/4 turn. (B) Turn the adjustment screw to adjust up to 5mm in either direction. Finally tighten lock screw.



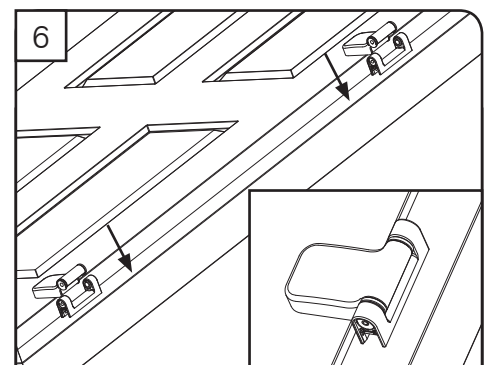
Height adjustment: Using a 4mm hex key turn the screw down to lift the hinge by up to 5mm.



Compression adjustment: Push out hinge pin and turn to alter compression.



The sash can be removed and fitted when in an open position by lifting or lowering the sash assembly onto the frame datum.



Alternatively the sash can be removed and fitted in the closed position by removing the security screw and hinge pin and then lifting the sash off the frame part.